

KALWALL®

high performance translucent building systems

1872
Paul Laurence
DUNBAR
1906

playwright
poet
author



Schools +
Educational Facilities



photo: Phil Grayson

Glare-free museum-quality daylighting™ comes in many forms. This project gallery provides a number of excellent applications that inspire.



photo: Jeffrey Totaro



photo: Jeffrey Totaro

Germantown Friends School Field House
Philadelphia, PA | Bohlin Cywinski Jackson

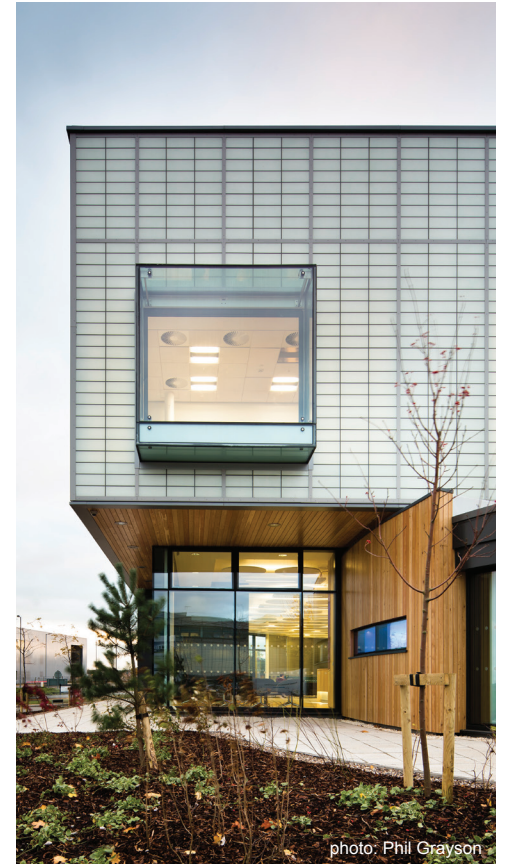


photo: Phil Grayson

Design Prototyping + Testing Centre (DPTC)
Rotherham, UK | Bond Bryan Architects



photo: Phil Grayson



photo: David Sundburg | Esto

Hunters Point Community Middle School
New York City, NY | FXFLOWLE Architects

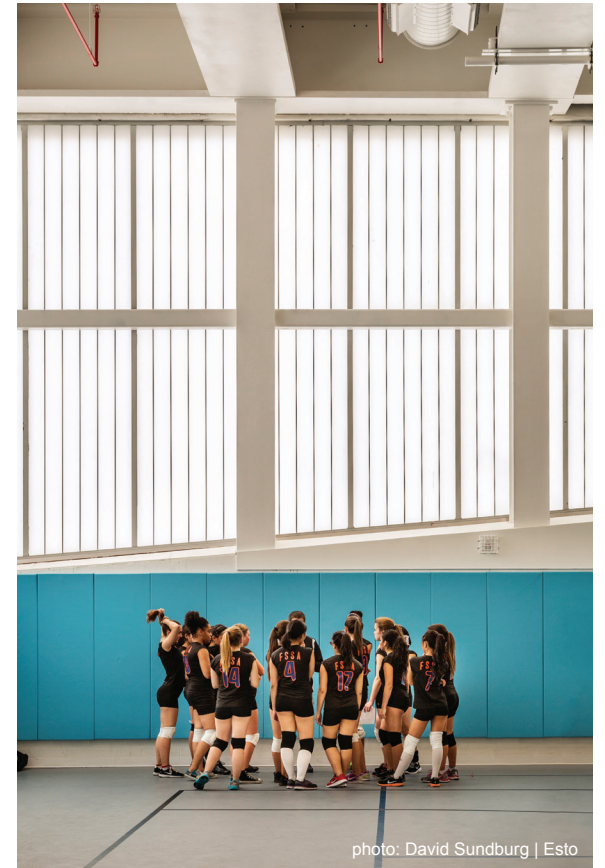


photo: David Sundburg | Esto



photo: James Brittain



photo: James Brittain

Thomas's Day School Early Learning Block
London, UK | Claridge Architects





FACADES

WALL SYSTEMS



WINDOW WALL SYSTEMS

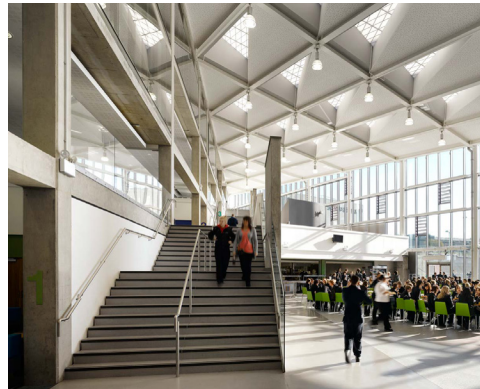


CURTAIN WALL SYSTEMS

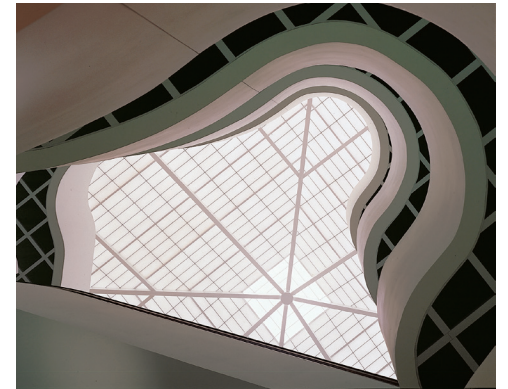


SKYROOFS®

PRE-ENGINEERED SKYROOFS



CUSTOM SKYROOFS



LARGE CLEARSPAN™ SKYROOFS



SPECIALTIES

CANOPIES + WALKWAYS



STANDARD SKYLIGHTS



WINDOW REPLACEMENT



photo: James Steinkamp

Metea Valley High School
Aurora, IL | DLR Group

PANEL OPTIONS:

Numerous FRP Face Sheets

Standard + Custom Grid-cores

U-value: 0.53 - 0.05 BTU/hr ft²F

Light Transmission: 3% - 50%

Solar Heat Gain: 0.07 - 0.65 SHGC

Panel Sizes: up to 5' x 20'

Panel Thickness(es): 2-3/4" | 4"

Lightweight: < 2.5 lbs/ft² (typical)

Shoji (1:2)

Shoji (2:1)

Tuckerman

Verti-Kal™

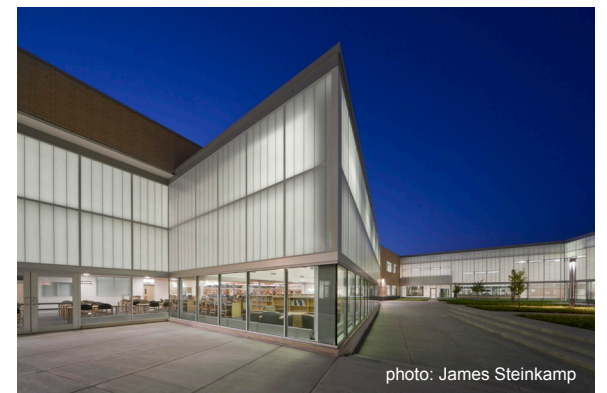


photo: James Steinkamp

Metea Valley High School
Aurora, IL | DLR Group



Kessler Photography

Omaha North High School
Omaha, NE | RDG Planning & Design



Lynnwood Natatorium

Lynnwood, WA | NAC Architecture



photo: Paul Warchol

Cornell Human Ecology Building
Ithaca, NY | Gruzen Samton + IBI Group



Christ the King Centre for Learning
Knowsley, UK | Aedas

Daylighting helps to create more productive, comfortable learning environments that illuminate:

- Classrooms + Science Labs
- Entrances, Canopies + Walkways
- Common + Circulation Areas
- Gymnasias + Field Houses
- Visual Art + Music Studios
- Theatre, Dance + Yoga Studios
- Cafeterias + Dining Halls
- Libraries + Media Centers
- Vocational Training Areas
- Pools + Natatoriums
- Administrative Offices



Sargent Shriver Elementary School
Silver Spring, MD | Architecture Inc



photo: Peter Aaron | OTTO

Yale Sculpture Building

New Haven, CT | KieranTimberlake

What is KALWALL ?

A Translucent, structural sandwich panel that provides:

Glare-free, balanced daylighting

Superior thermal performance

Energy + electricity saving

Low maintenance life cycle requirements

Safety + security through visual privacy

Durability + graffiti / vandal-resistance

Hurricane, explosion venting + blast rated options



© CABOT Corp

For unparalleled thermal performance in translucent daylighting, please consider specifying **Kalwall + Lumira®** aerogel. Available in 2-3/4" thick panels up to: 4' x 12' and 5' x 10' with a .05 U-factor (R-20) and 20% visible light transmission.

