



**Structures Unlimited, Inc.**  
*Energy-Efficient Skylights & Pool Enclosures*

# Specialized Industrial & Municipal Building Systems



- *Pre-engineered Structural Aluminum Enclosures*
- *Single-source Design, Manufacturing and Installation*
- *Translucent Sandwich Panel System*
- *Maintenance-free*
- *Corrosion-proof*
- *Large-size, Removable Skylights*
- *Explosion-venting Wall Systems*
- *Operable Roof Systems*
- *Thermally Broken Panels*



## Structures, Skylights, Walls and Windows

Every Structures Unlimited, Inc. structure is custom-tailored and built from standard components designed to meet your needs. This is reflected in the various methods in which our structures can be designed, such as center ridge, shed, hip and circular.

- Enclosures from Structures Unlimited can be installed over existing basins. Engineering data can be provided at the design phase to complete basin evaluation and anchor bolt placement.
- Allows re-use of existing infrastructure.
- Is a cost effective way to house expensive equipment out of the weather in a pre-engineered, moisture-resistant building.
- Designed to meet local building code requirements.
- Building scope can include all doors, windows, hardware, trim, flashing, etc., for a complete building package.
- The total enclosure costs are competitive with other insulated building systems designed for a wet environment.
- Both the inside and outside surfaces are ultra-smooth – resist dirt, dust and bacteria build-up.
- All materials used in our enclosures are resistant to moisture and chlorine and consequently require virtually no maintenance.



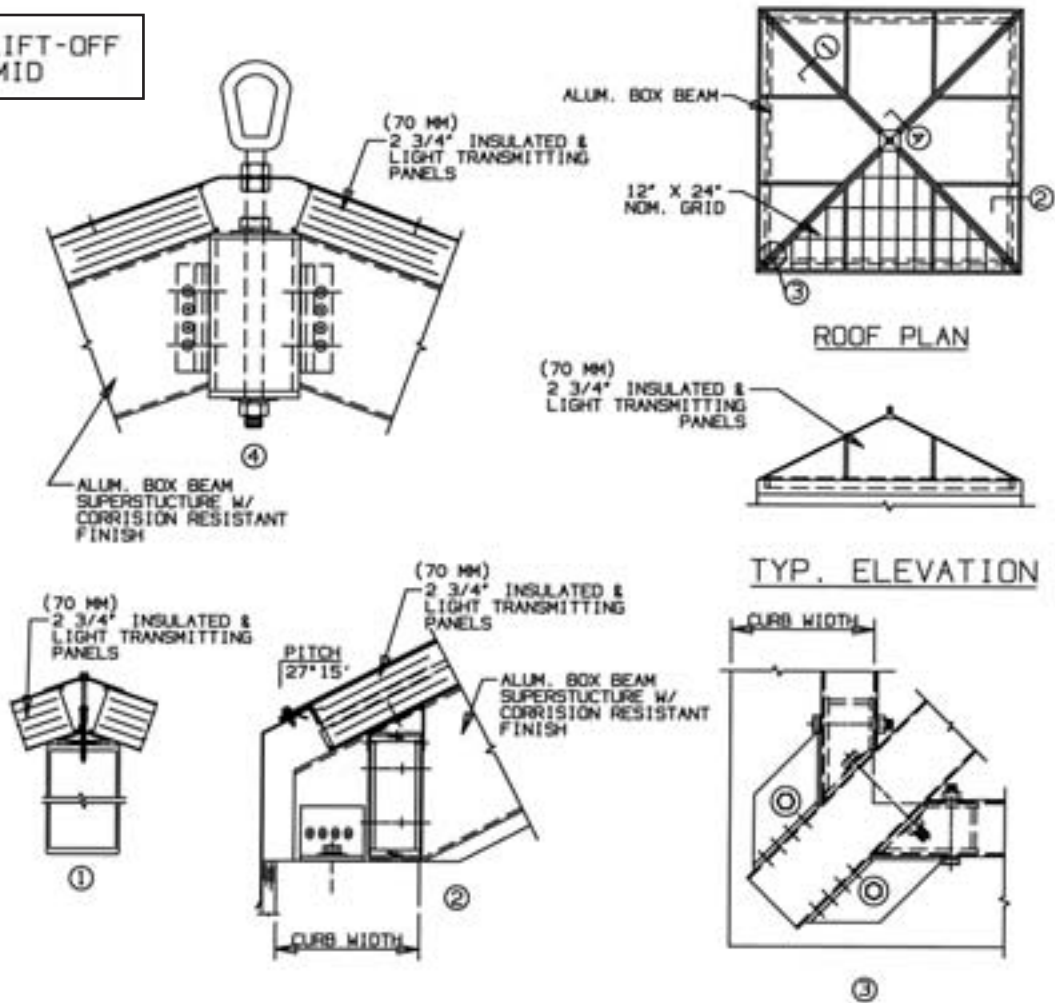
## Special Approvals & Listings

- FM Explosion Venting Walls standard 4440
- FM Wall and Roof Systems standards 4881 and 4471
- Hurricane-resistant Systems
- NFRC Certified Systems (U-values as low as .10)
- UL Listings for Class A Roof System and Faces
- DoD and GSA Anti-Terrorism Compliant (UFC 4-010-01 Blast-resistant Construction)
- AAMA 2604 Paint Finish

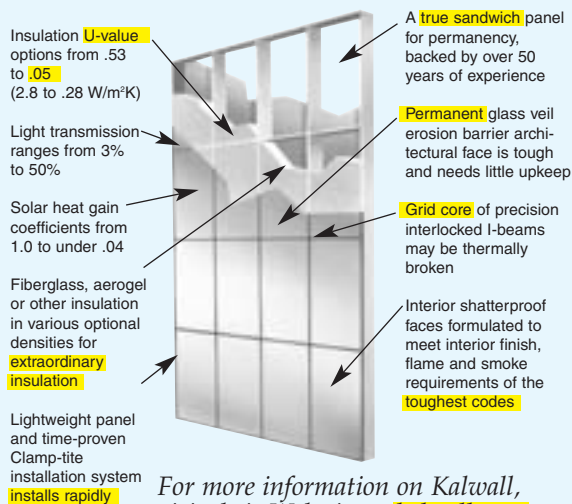


**Structures Unlimited, Inc.**  
Energy-Efficient Skylights & Pool Enclosures

## TYPICAL LIFT-OFF PYRAMID



Structures Unlimited, Inc. skylights utilize the patented Kalwall® structural roof panel system. It's the most highly insulating, diffuse-light-transmitting technology in the world! Structural thermally broken panels – NFRC Certified, and ICC and UL Listed.

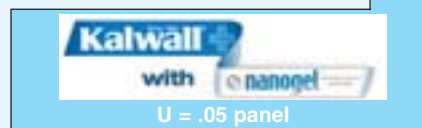


For more information on Kalwall, visit their Web site at [kalwall.com](http://kalwall.com)

### Energy and Daylighting Characteristics

Listed are a few of the light transmitting, solar heat gain and insulating factors of the many common face combinations of Kalwall Structural Roof Panels. Many other options are available.

FACE SHEET COMBINATIONS		% LIGHT TRANSMISSION AT <sup>note 1</sup> VARIOUS INSULATION U-VALUES				SKYROOF SOLAR HEAT GAIN COEFFICIENT @ 0° <sup>note 2</sup>			
EXTERIOR COLOR	INTERIOR COLOR	.23 "U" <sup>note 3</sup>	.14 "U" <sup>note 3</sup>	.10 "U" <sup>note 3</sup>	.05 "U" <sup>note 3</sup>	.23 "U" <sup>note 3</sup>	.14 "U" <sup>note 3</sup>	.10 "U" <sup>note 3</sup>	.05 "U" <sup>note 3</sup>
Aqua	White	17	6	4	12	0.19	0.10	0.07	0.11
Rose	White	18	6	4	12	0.19	0.10	0.07	0.11
Ice Blue	White	20	8	6	15	0.22	0.11	0.07	0.12
White	White	15	8	5	12	0.16	0.09	0.06	0.09
Crystal	White	20	12	8	15	0.23	0.11	0.07	0.11
Crystal	Crystal	30	15	10	20	0.27	0.14	0.09	0.12



U-value SI conversion: 1.0 W/m²K - 0.176 Btu/hr/ft²/°F

1. Approximate values by ASTM E-972.

2. At 0° incident angle.

3. U-values determined by NFRC test method at certified labs.

### NEW Kalwall 100™ – 4" (100 mm) thick panels for even greater energy and structural performance!

FACE SHEET COMBINATIONS		% LIGHT TRANSMISSION			SOLAR HEAT GAIN COEFFICIENT		
EXTERIOR COLOR	INTERIOR COLOR	.55 "U"	.15 "U"	.08 "U"	.55 "U"	.15 "U"	.08 "U"
White	White	20	12	5	0.38	0.06	NA
Crystal	White	35	14	7	0.52	0.08	0.04
Crystal	Crystal	50	17	8	0.65	0.10	0.07

Check with Technical Services Department for further clarification. Since these tables are of a very technical nature, please consult your heating and ventilation engineer for proper interpretation. Please verify latest technical information, as product changes can affect performance.

# Structures Unlimited Enclosures are Erected Fast!

Completely factory engineered, prefabricated and pre-finished, our structures go up fast. Prefabrication and total factory responsibility also mean no construction

delays or errors. And our structures can be erected at any time during the year, regardless of weather.



## Structures Unlimited, Inc. *Energy-Efficient Skylights & Pool Enclosures*

*Design, manufacture and construction backed by over 50 years of experience.*

88 Pine St., P.O. Box 5650, Manchester, NH 03108  
Phone: 603-645-6539 (800-225-3895 N. America) • Fax: 603-625-0798  
Email: [info@structuresunlimitedinc.com](mailto:info@structuresunlimitedinc.com)

[structuresunlimitedinc.com](http://structuresunlimitedinc.com) • [kalwall.com](http://kalwall.com) • [daylightmodeling.com](http://daylightmodeling.com)

Kalwall is a registered trademark of Kalwall Corporation.  
Nanogel is a registered trademark of Cabot Corporation.  
This is descriptive literature and does not constitute warranties, expressed or implied.  
For statement of warranty, contact Structures Unlimited, Inc.



ICC-ES  
Listed  
PFC 1705



Printed on Recycled Paper

©2009 Structures Unlimited, Inc.